



Spooky² Scalar

INSTRUCTION

June 2020
Spooky2 Team

Our Mission:

We will eliminate all illnesses and needless suffering.

Our Vision:

We aim to empower people to take control of their own health and live long, healthy, fulfilling lives with happiness and joy.

Our Value:

We value love, compassion and honesty over profit.

Spooky2 Scalar

Brief Overview

1

Parcel Contents

2

Detailed Overview

3

Setting up Spooky2 Scalar

4

Tuning

5

How to Apply Scalar Energy

8

Important Notes

11

Specifications

11

Spooky2 Scalar Digitizer

Brief Overview

12

Hardware

12

Software

15

Legal Notice & Disclaimer

21

Spooky2 Scalar

Brief Overview

The key to healing is information - Scalar information. Our cells communicate using Scalar fields. When this communication is blocked, our health suffers. Spooky2 Scalar can restore our body's natural healing mechanisms.

Spooky2 Scalar is the first Scalar treatment device to provide three different methods of sending healing Scalar waves. You can choose which of these best suits your needs. You can read more in the "How to Apply Scalar Energy" section.

Spooky2 Scalar is comprised of two black cases. One is called a Transmitter, and the other, a Receiver. The Transmitter is turned on and tuned. Anyone between the lids of the two cases receives life-giving Scalar waves. Scalar treatments can be that simple.



Parcel Contents



Transmitter Box x 1



Receiver Box x 1



Link Cable x 1



Power Cable x 1



BNC Cable x 1

Detailed Overview

Transmitter Panel:



Receiver Panel:



Setting Up Spooky2 Scalar

Starting Scalar treatments is a breeze. There are 4 simple steps:

1. Place the Transmitter and Receiver either side of a chair or bed.
2. Connect the 12V Power Adapter to the Transmitter Power Port.
3. Plug the Link Cable into the Transmitter and Receiver Link Connectors.
4. Turn on and tune the Transmitter.



Tuning

Just like a radio, Spooky2 Scalar requires tuning. It is very simple to do.

Turn the Tuning Adjustment knob anticlockwise until the Tuning Light beside the transmitter coil is at its first maximum brightness.



In order not to interfere with your sleep at night, the Frequency Display will automatically go off in 5 minutes if you don't touch the knob.

Important Note

There are two peaks during tuning. The first peak in the indication light indicates that the “ideal” scalar frequency has been found. The frequency range when the light illuminates is quite broad.

If you continue to turn the tuning knob anticlockwise, the indication light will extinguish, and then will come back on. This second, lower frequency is the EMF operating frequency. It is the confirmation that the scalar frequency was found in the previous step.

Receiver Light

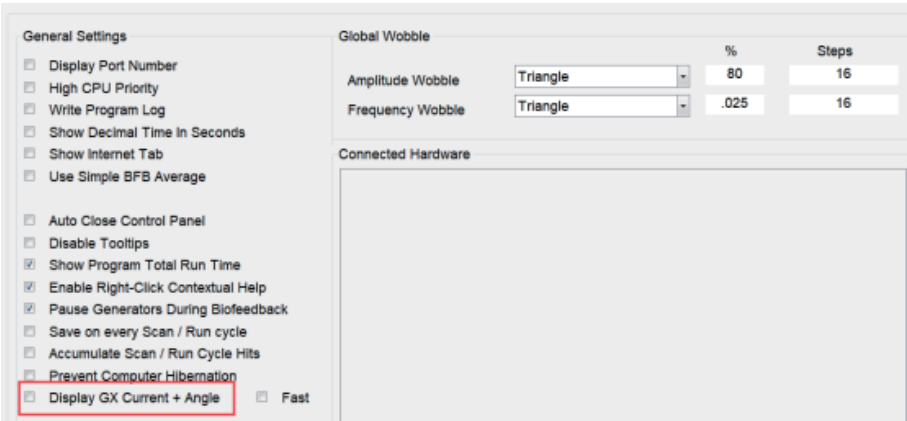


1. After tuning, turn the Receiver Light on. It will illuminate when a scalar field is present.
2. The Receiver Light only needs to be dimly lit. It does not need to be at its brightest intensity.
3. Turn the Receiver Light off during scalar treatments. It takes energy from the scalar field.
4. Use the Transmitter Tuning Light for tuning. The Receiver Light can be used to confirm that a scalar field has been established.

When performing a scalar biofeedback scan or running Rife Scalar, it is normal that the Receiver Light may be on, dim or even be completely off. Some power is lost in the Scalar Digitizer and GeneratorX, causing the link cable to become more sensitive to the effects of earthing.

If the Receiver Light is off, you can do a test to make confirm that the scalar field is actually present.

Go to the system tab and select “Display GX Current + Angle”.



Then go to the Control tab and check the scan graph. The graph will be moving. Placing your hand in the scalar field should influence this graph, proving that a scalar field is present.

How to Apply Scalar Energy

Spooky2 Scalar can apply Scalar energy in three different ways: Pure Scalar, Molecular Scalar, and Rife Scalar.

Pure Scalar

This is the easiest way of applying healing Scalar energy. Because nothing special needs to be done. Tune Spooky2 Scalar, then sit or lie between the Transmitter and Receiver. Pure Scalar energy then flows between the Transmitter and Receiver.

Molecular Scalar

The Scalar signal can be enhanced by placing a substance on the receiver coil. The molecules within the sample will change the signal between the lids. You get the curative effect of the chemical. The substance can be essential oils or drugs. For instance, you can place peppermint oil on the receiver coil, and you will receive the benefits that peppermint oil provides.



Scientific studies have proven that information alone can cause destruction to pathogens. Poisoned cancer cells on the receiver coil will induce death of cancer cells inside your body. The information of the dying cells is being passed to your internal cancer cells, and they also die.

Rife Scalar

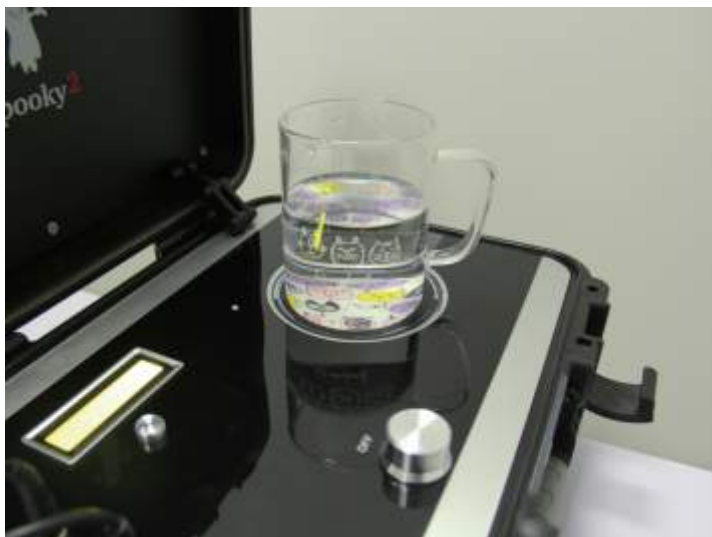
The third way to improve the Scalar waves is Rife Modulation. It combines the discoveries of Royal Rife with Nicola Tesla. Royal Rife found that pathogens respond to a particular frequency. Spooky2 Scalar can apply this frequency using healing Scalar waves. Only Spooky2 Scalar can modulate the original frequencies of Royal Rife. It turns Spooky2 Scalar into the world's most advanced Rife machine.

Connect a Spooky2 generator to the Generator port on the Transmitter box. Turn on the generator and tune your Spooky2 Scalar. Select the Spooky2 Scalar General (SS) - JW preset (square wave, 5v and 100% offset.) Load the programs you wish to run, and start the generator. Sit between the Transmitter and Receiver while programs are running. Spooky2 Scalar accepts any frequency from the massive Spooky2 database.

If you are new to Spooky2 Rife Machine, you can read more information on spooky2.com and spooky2-mall.com.



You can put a glass of water on the transmitter coil during Molecular or Rife Scalar treatments. This is the process called frequency imprinting. After you put the glass on the transmitter coil, retune your Spooky2 Scalar before your Scalar treatment. When you finish the Scalar treatment, you can drink this water during the day to enhance the treatment effects.



The two modulation methods can be used simultaneously to further improve effectiveness of treatments. For example, to treat Cancer, you can place Frankincense, Peppermint, Lavender, Evening Primrose and Citrus essential oils on the receiver coil, and run cancer-killing programs on the connected Spooky2 generator.

For example, people with cancer may wish to place a chemotherapy drug on the receiver coil to induce cancer death in their body. Adding a cancer toxin to a sample of their urine or blood and placing that on the receiver coil will improve results further, as the information of the cancer cells dying will be transferred to the cancer cells in the body. They too will die.

Important Notes

1. Tune before each treatment. The tuning point may vary each day according to the temperature and humidity, as well as the layout of the machine.
2. The Transmitter and Receiver should have their lids facing each other.
3. Keep the link cable between the Transmitter and Receiver away from metal. Please do not roll the cable if the cable is long.
4. People who are pregnant or have a pacemaker should not use Spooky2 Scalar.
5. Overnight treatments are perfectly safe. You do not get “Frequency Fatigue” from overexposure to Scalar fields. Your body takes what it needs, and disregards the rest.
6. It's best not to share the Scalar field with anyone who has serious illness.

7. Free Gift: BNC Cable

We provide a BNC Cable in your parcel. You can use this BNC cable to connect with a Spooky2 Generator to experience Rife Scalar Treatments. It is not needed for Pure Scalar or Molecular Scalar treatment.

Specifications

Transmitter Size: 170mm (H) x 360 (W) x 290 (D)

Receiver Size: 170mm (H) x 360 (W) x 290 (D)

Weight: 11 kg

Power Adapter: 12 VDC 2A

Input Current Maximum: 0.6A

Frequency Range: 1.00 MHz - 8.00 MHz

Frequency Step Size: 50 kHz

Scalar Flow: 30mA

Free Gift: BNC Cable

Spooky2 Scalar Digitizer

Brief Overview

Biofeedback is a way of finding out what frequencies are best suited to your body. Spooky2 Scalar is the only Scalar device capable of performing a biofeedback scan. Spooky2 Scalar Digitizer measures tiny changes in the scalar field during a scalar frequency scan.

Scalar biofeedback requires the use of two generators. GX is two generators in one. G2 modulates the Scalar field, and G1 measures the response. Follow the instructions below to perform a Scalar biofeedback scan.

Hardware

1. Connect Scalar Digitizer to the link cable port on the Scalar Transmitter.



2. Connect the link cable and power cable to the Spooky2 Scalar Transmitter.



3. Connect G1 Out 1 to the Spooky2 Scalar Digitizer BNC port.



4. Connect G2 Out 1 to the Spooky2 Scalar Transmitter BNC port.



5. Connect GX to the computer USB port and short press the Power button to turn on GX.



6. Turn on and tune your Spooky2 Scalar.

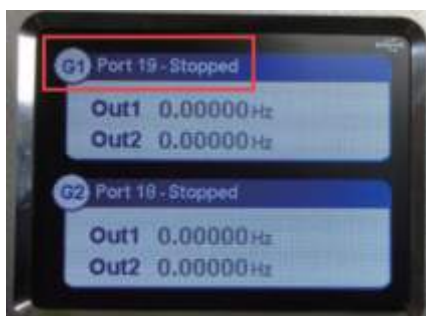
Tip:

GX should not be in the Scalar field, because the case and electronics in GX are metal, and will distort the field. Please keep GX 1m away from Spooky2 Scalar Transmitter, and 1m from the Scalar field.

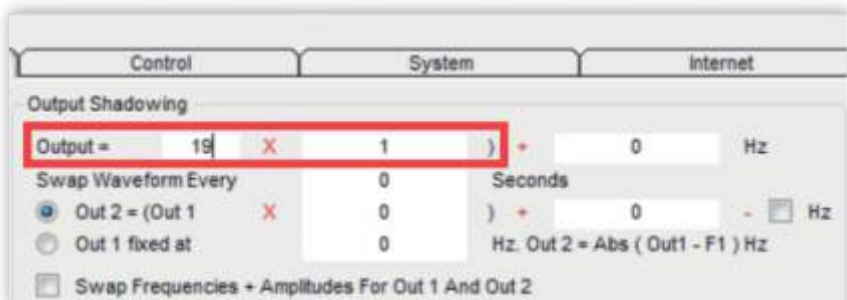
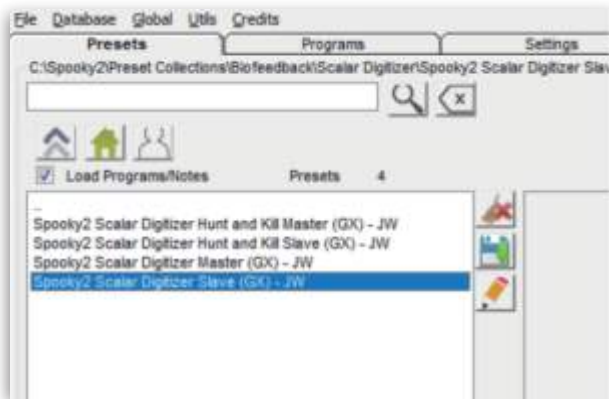


Software

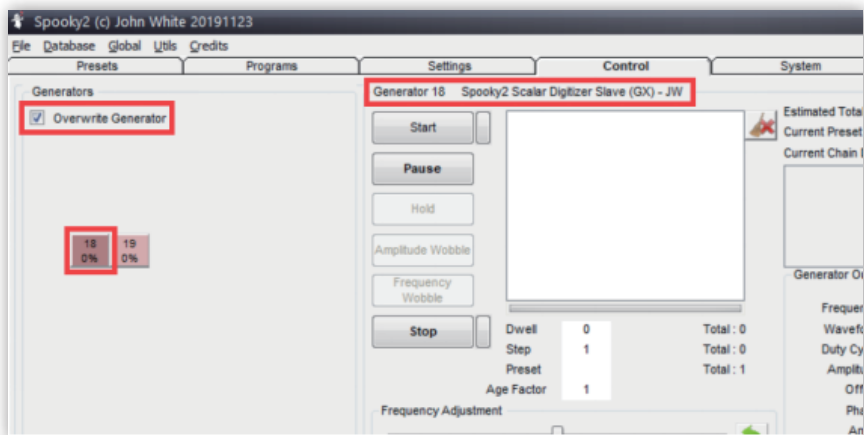
1. Launch the Spook2 software. Please take a note for the corresponding port numbers for G1 and G2, which can be seen on the GX display. In this example, G1 is Port 19 and G2 is Port 18.



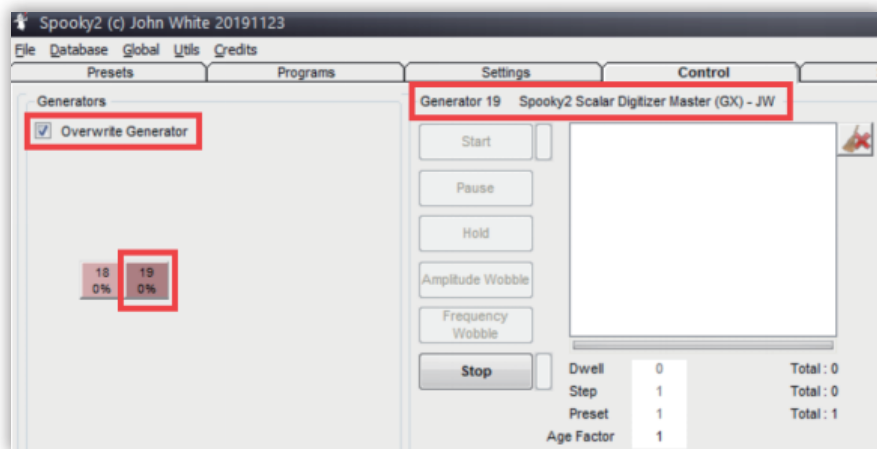
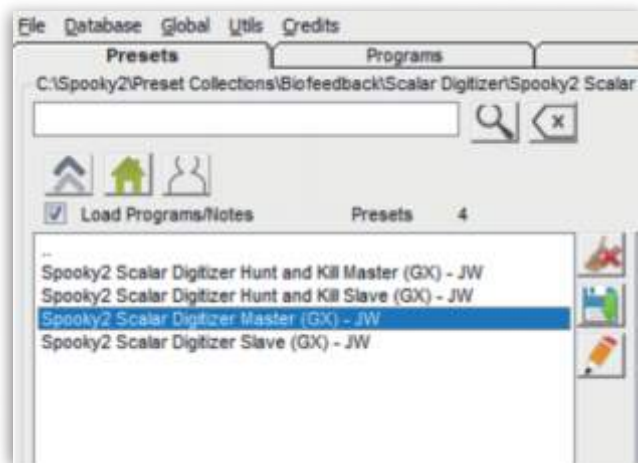
2. Select the Spooky2 Scalar Digitizer Slave (GX) - JW preset, then go to the Settings tab. In the Output Shadowing frame, set 'Output = [x]', x = the port number of G1. Here, x=19.



3. Go to the Control tab, tick Overwrite Generator and choose G2 (Port 18) to load the settings.

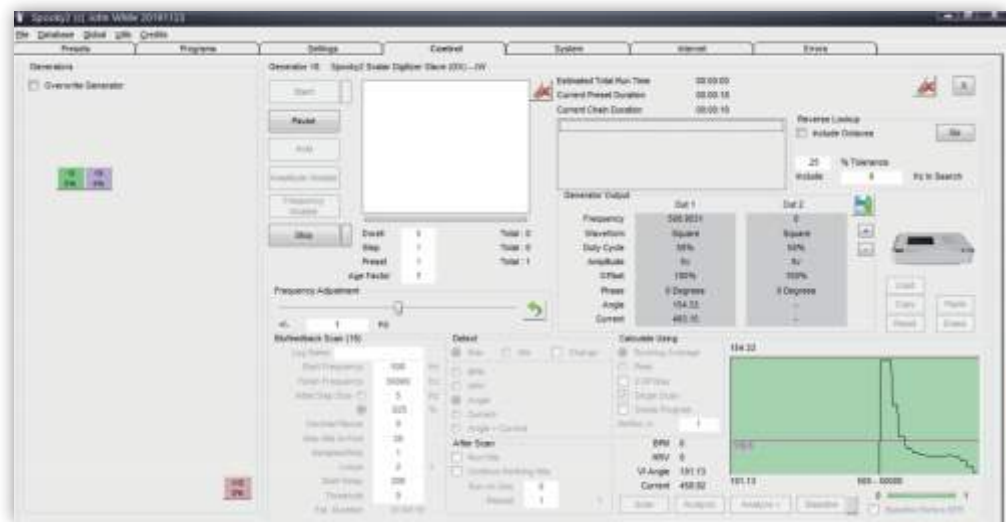


4. Then, go back to the Presets tab. Select the BFB Master preset, go to the Control tab, tick Overwrite Generator, and choose G1 (Port 19) to load the preset.



5. Lie between the two scalar units, and ask an assistant to click the Scan button to start the biofeedback scan.

Note: If you do not have anyone to help, set the Start Delay to 2000. This will give you time to start the biofeedback scan and position yourself correctly between the units.



G2 will automatically start, causing Spooky2 Scalar to transmit the generator frequencies. G1 will start, but no frequencies will be produced. Instead, the amount of Scalar energy being absorbed for each frequency by the body will be recorded.

When your scan completes, you will see the results presented in a new window. Save the frequency results by clicking the Save button.

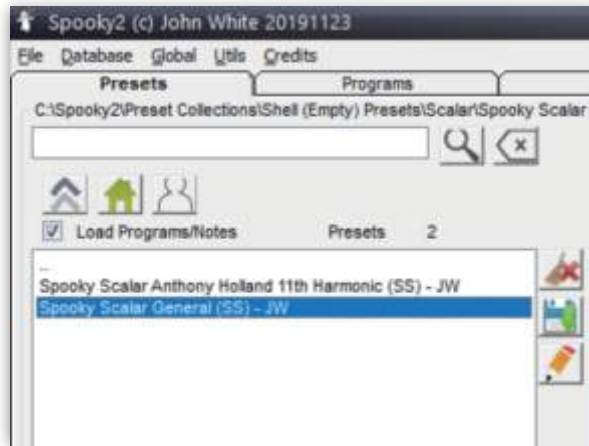


This will take you to the Create Program window. Name your scan results set appropriately, then select Save. We suggest including the person's name and date. You can edit the Notes if you wish for future reference.



Spooky2 will automatically refresh the database after adding the new program. Your new program can now be searched in the Programs tab.

Use Spooky Scalar General (SS) - JW preset to run your scan results.



Tips:

1. It is best to lie perfectly still, and only have one person in the Scalar field. This field extends outward, so ensure no living organism is nearby.
2. It is important to make a note which port numbers correspond to G1 and G2 before running a biofeedback.
3. Spooky2 Scalar BFB Master preset performs the recording. Spooky2 Scalar BFB Slave preset supplies the frequencies for Spooky2 Scalar modulation.
4. We suggest using G1 with Spooky2 Scalar BFB Master preset, and G2 with the corresponding slave preset.
5. You can do short scans once a day and longer scans once a week.
6. It is best to remove Spooky2 Scalar Digitizer and retune Spooky2 Scalar before running the biofeedback results. Spooky2 Scalar Digitizer slightly reduces the scalar field strength.

Legal Notice & Disclaimer

Spooky2 Scalar is intended for using as an experimental electronic device only. It is not intended for the diagnosis, prevention, cure, treatment, or mitigation of any disease or illness in human beings.

People and/or entities involved in the development, manufacture and/or marketing of Spooky/Spooky2 equipment (hereafter referred to as “we” or “us”) make no medical claims whatsoever for the Spooky2 Scalar and/or Spooky2 frequency generation system. If you have a problem with your health, please consult a licensed healthcare professional.

Please note that we are not responsible whatsoever for the use, abuse, or misuse, intentionally or unintentionally, of the Spooky2 Scalar and/or Spooky2 frequency generation system or any of its component parts due to any circumstances beyond our reasonable control. In any case, we shall have no other liability.

By using the Spooky2 Scalar and/or Spooky2 frequency generation system, you, the user, understand and accept that you have no expectation of curing any ailment.

You also understand that possible negative physical and/or mental effects, unknown to us, might result from the use of the Spooky2 Scalar and/or Spooky2 frequency generation system. Moreover, you intend to undertake only responsible experimentation, and you voluntarily accept all responsibility for the use and application of Spooky2 Scalar.

Furthermore, you agree that you will not hold us responsible for any consequences, whether harmful or otherwise, that may occur as a result of using the Spooky2 Scalar and /or Spooky2 frequency generation system.

Spooky²

www.spooky2scalar.com